

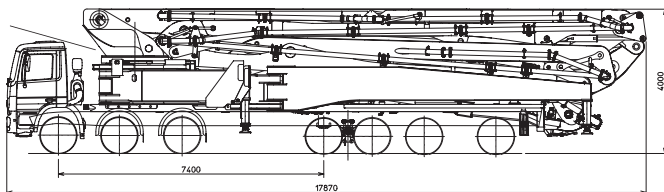
## K80H

### TRUCK-MOUNTED CONCRETE BOOM PUMP

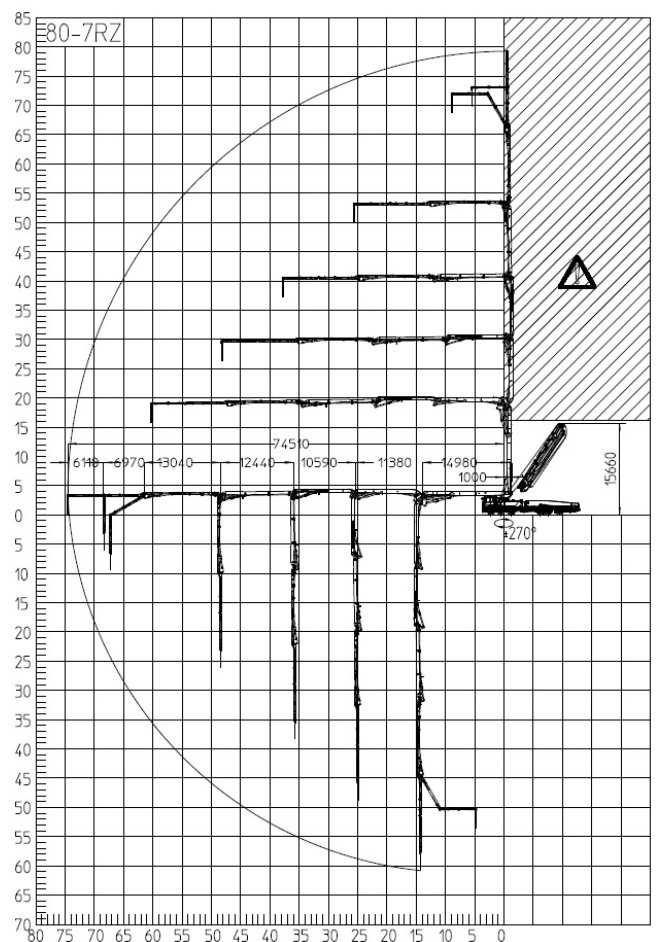
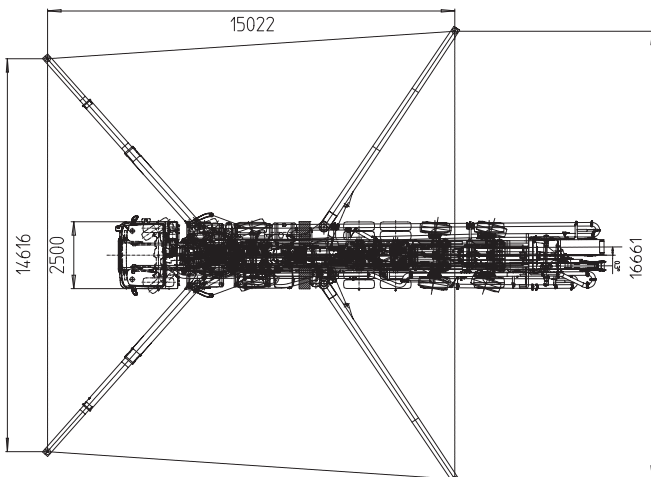
Placing boom	B7RRZ 80/76
Pumping unit	HP1808ECX
Driven by	PTO
Chassis	7 axles



### Dimensions



Dimensions vary according to truck assembly



## K80H

### Standard equipment

- Placing boom B7HRR 80/76, 7 sections, pipeline diameter 125 mm, "RRZ" folding system
- 4<sup>th</sup>, 5<sup>th</sup>, 6<sup>th</sup>, 7<sup>th</sup> boom sections made of light and resistant CIFA CARBOTECH composite material. 1<sup>st</sup>, 2<sup>nd</sup> and 3<sup>rd</sup> sections made of high strength steel
- Assembly on 7 axles truck
- Fully hydraulic outrigger controls on both sides of the truck
- Front telescopic swing-out outriggers and swing-out rear outriggers
- "Load Sensing" proportional boom control
- "BFC" Best-Flex Cifa supporting system allowing just one man to change delivery pipeline easily, quickly and safe
- Concrete flow rate regulator
- Safety device on opening inspection hatch
- Pumping unit with closed loop HP1808ECX
- Project conforms to Directive Machinery 2006/42/CE
- 2 Proportional radio control with two boom movement speed, synthesizer for automatic frequency search, 8 position joy stick and concrete flow rate regulator. 20 mt cable
- Double thickness concrete pipes, in high resistant steel and insert carbide chrome - CIFA Long Life Pipes
- Emergency control pad for pumping unit
- Remote controlled electric vibrator placed on the concrete hopper grid
- Centralized lubrication system for pumping unit
- Automatic oil lubrication system for pumping pistons
- Additional manual lubrication system for pumping pistons
- Hard plastic outrigger support plates with relative housing
- Rear light on hopper
- Level readers for stabilization control
- Accessories for cleaning and pipes washing
- Fiber glass hopper covering
- Medium pressure water pump (50l/50bar)
- Emergency pumping unit kit

### Control system

- Smartronic Gold
  - intergrated color LCD
  - counters
  - pumping unit management
  - diagnostic
  - capsense rear panel
  - ASC (Advanced Stability Control)

### Main Options

- High pressure water pump 28l / 120 bar
- Air compressor for pipeline cleaning
- Centralized lubrication system for placing boom
- Air pipeline for placing boom
- Separated emergency engine kit for independent control of the concrete pumping unit, boom and water pump
- Concrete shut-off valve
- Rear camera for easy manoeuvring
- Double thickness boom straight pipes, in high resistant steel and insert carbide chrome - CIFA LLT Long Life Top
- Proportional radio control with display

### TRUCK-MOUNTED CONCRETE BOOM PUMP

<b>Placing boom</b>	B7RRZ 80/76
<b>Pumping unit</b>	HP1808ECX
<b>Driven by</b>	PTO
<b>Chassis</b>	7 axles

### Pumping unit technical data

Model		HP1808ECX
Max. theoretical output	<i>m<sup>3</sup>/h</i>	180
Max. pressure on concrete	<i>bar</i>	83
Concrete cylinders (diam. x stroke)	<i>mm</i>	260x2100
Concrete hopper capacity	<i>l</i>	600
Hydraulic circuit		closed

### Placing boom technical data

Model		B7HRR 80/76
Pipeline diameter	<i>mm</i>	125
Max. vertical reach	<i>m</i>	79,5
Max. horizontal distance (from center of slewing axis)	<i>m</i>	74,5
Net horizontal reach	<i>m</i>	68,20
Min. unfolding height	<i>m</i>	15,66
Section numbers		7
1st section opening angle		90°
2nd, 3rd, 4th, 5th section opening angle		180°
6th section opening angle		210°
7th section opening angle		90°
Rotating angle		± 270°
End hose length	<i>m</i>	3

Technical data and characteristics subject to modifications without notice