

## K30L

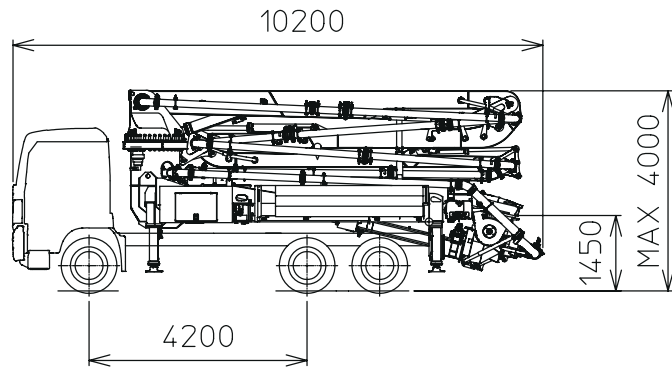
### TRUCK-MOUNTED CONCRETE BOOM PUMP

Placing boom  
Pumping unit  
Driven by  
Chassis

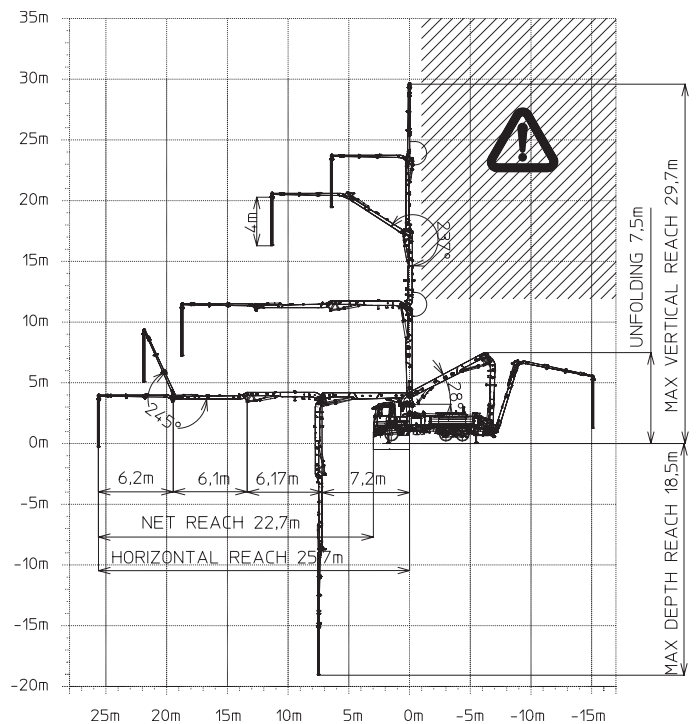
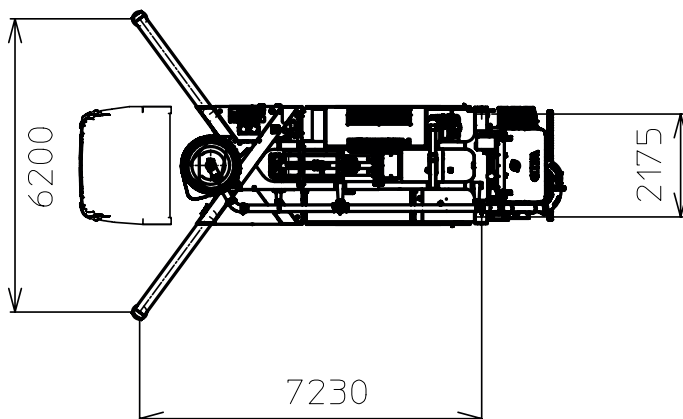
B4Z 30/26  
PA 1506 F8  
PTO or gearbox  
3 axles



### Dimensions



Dimensions varying according to truck assembly



## K30L

### Standard equipment

- Assembling on standard 3 axles chassis
- Self-supporting frame, torsion free, FEM designed
- Placing boom B4Z 30/26, 4 sections, "Z" folding system
- Fully hydraulic outrigger controls on both sides of the truck
- Front outriggers "X" style for a quick set-up and easy pump placement in narrow areas
- Proportional boom control
- The "BFC" Best-Flex Cifa supporting system allowing just one man to change delivery pipeline easily, quickly and safely
- Concrete flow rate regulator
- Safety device on opening inspection hatch
- Project conforms to Directive Machinery 2006/42/CE
- 2 Proportional radio control with two boom movement speed, synthesizer for automatic frequency search, 8 position joy stick and concrete flow rate regulator. 20 mt cable
- Double thickness concrete pipes, in high resistant steel and insert carbide chrome - CIFA Long Life Pipes
- Remote controlled electric vibrator placed on the concrete hopper grid
- Hard plastic outrigger support plates with relative housing
- Rear light on hopper
- Level readers for stabilization control
- Accessories for cleaning and pipes washing
- HPG-EPC pumping unit with closed circuit and reversal flow: superb performances, high pressures and output, high reliability and easy and reduced maintenance; 9 inches S valve
- Medium pressure water pump (50l/50bar)

### Main options

- LSC - Light Stability Control
- Pneumatic concrete valve - Shut-off valve
- High pressure water pump (28l/120 bar)
- Centralized lubrication system for placing boom
- Separated emergency engine kit for independent control of the concrete pumping unit, boom and water pump

### TRUCK-MOUNTED CONCRETE BOOM PUMP

Placing boom	B4Z 30/26
Pumping unit	PA1506F8
Driven by	PTO or gear box
Chassis	3 axles

### Pumping unit technical data

Model		PA1506/909F8
Max. theoretical output	m <sup>3</sup> /h	150
Max. pressure on concrete	bar	53
Concrete hopper capacity	l	550
Hydraulic circuit		open

### Placing boom technical data

Model		B4Z 30/26
Pipeline diameter	mm	125
Max. vertical reach	m	29,7
Max. horizontal distance	m	25,6
Min. unfolding height	m	7,5
Section numbers		4
1st section opening angle		90°
2nd section opening angle		180°
3rd section opening angle		237°
4th section opening angle		245°
Rotating angle		+/-270°
End hose length	m	4

Technical data and characteristics subject to modifications without notice

